

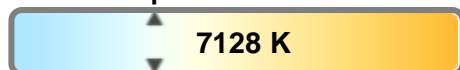
Light efficiency:



Light quality:



Color temperature:

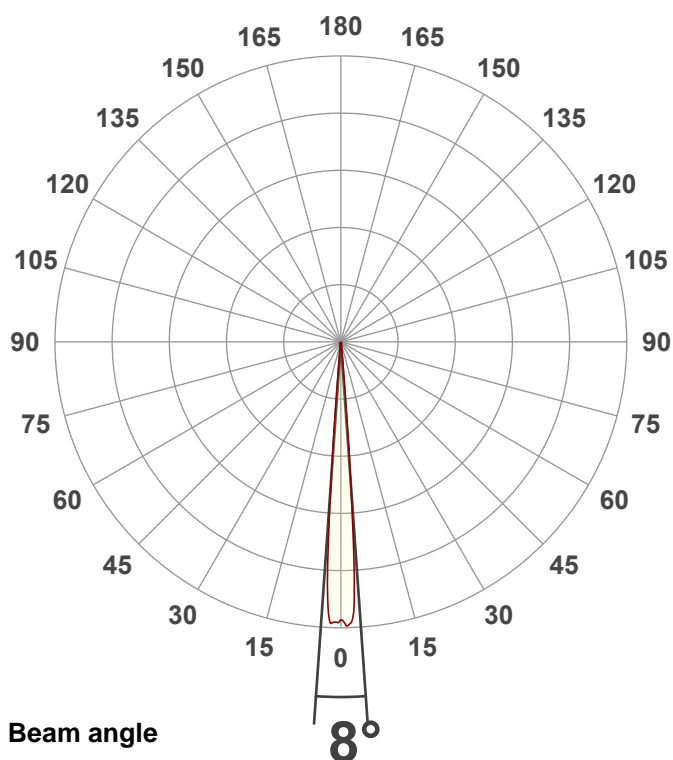


Output: 396 lm
Peak: 22927 cd
Power: 24.9 W
PF: 0.61



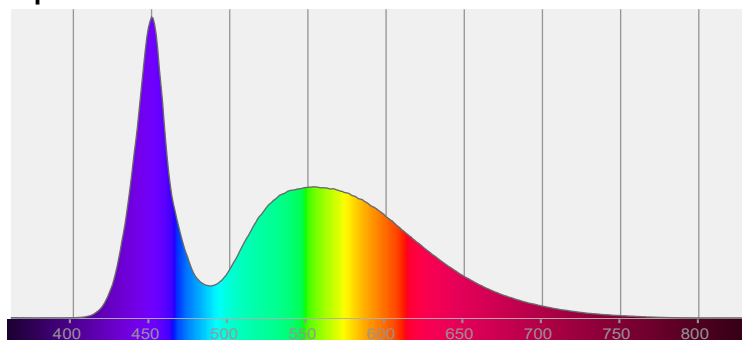
Product name:
Stealth Wash Zoom (Zoom In White)
Item number:

Date and time:
5/7/2019 1:17:29 PM

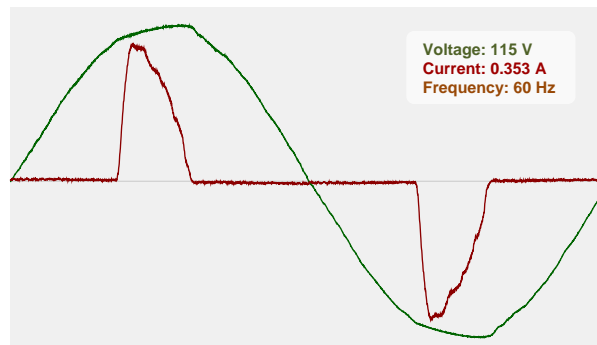


CIE 1931
x: 0.306
y: 0.312

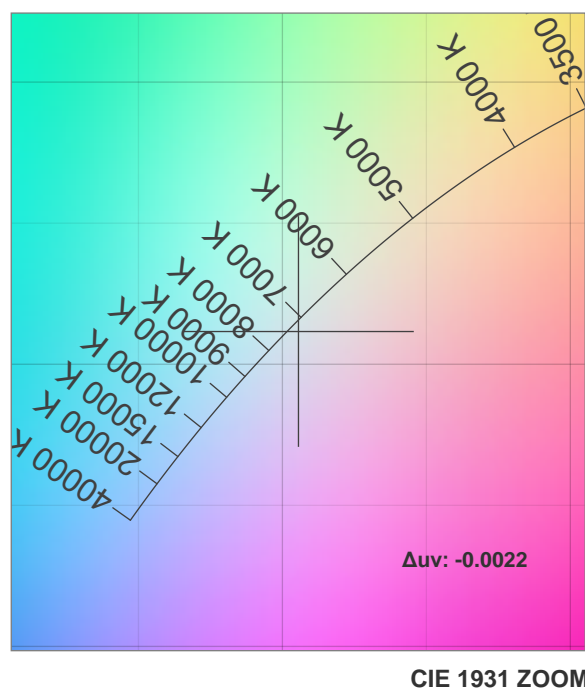
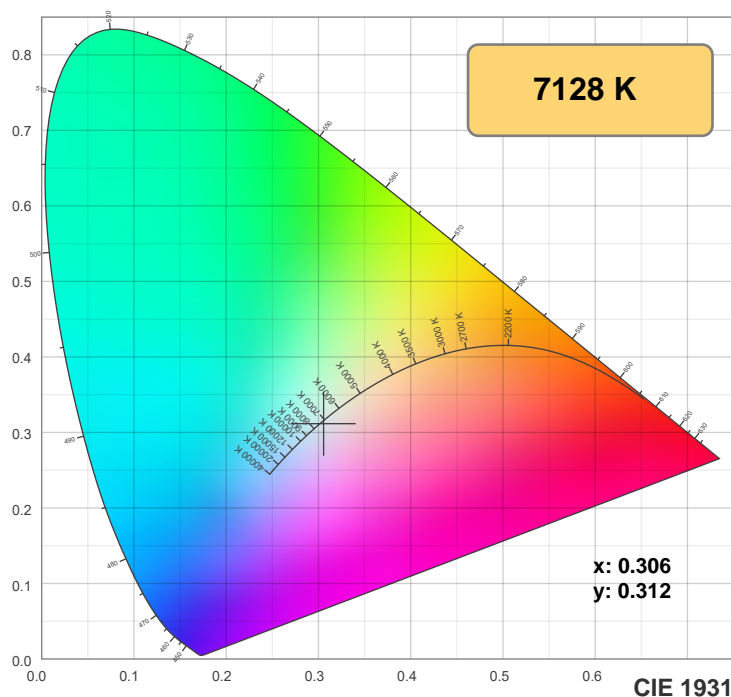
Spectra



Power

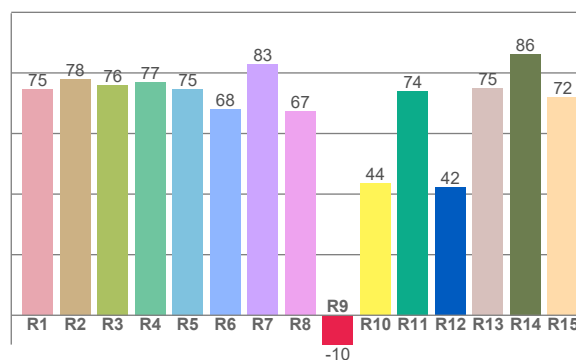
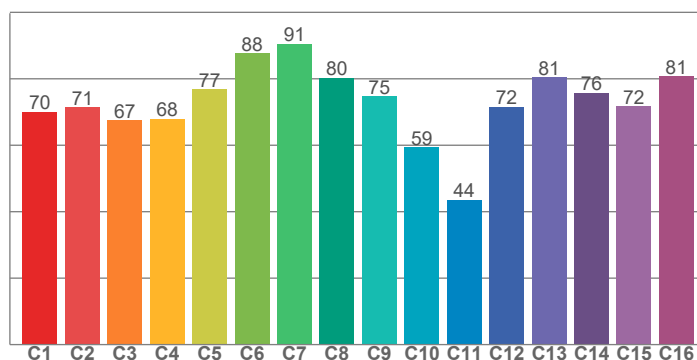


Color details



TM-30: 73.1

CRI: 74.8 (R1-R8)



CRI R values, only R1-R8 are used to calculate final CRI value

R1	R2	R3	R4	R5	R6	R7	R8	R9	R10	R11	R12	R13	R14	R15
74.6	77.9	76.0	77.0	74.7	67.9	82.7	67.2	-9.7	43.6	74.0	42.2	74.8	86.3	71.8

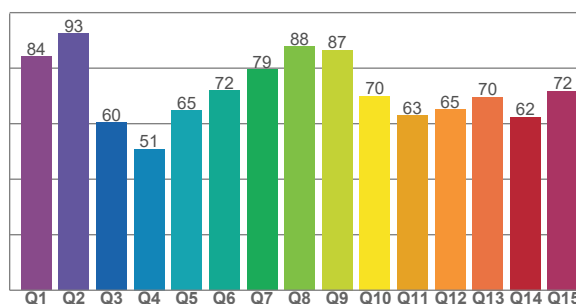
TM30 C values, 16 binned values out of total of 99 C values

C1	C2	C3	C4	C5	C6	C7	C8	C9	C10	C11	C12	C13	C14	C15	C16
70.1	71.4	67.5	67.9	76.8	87.7	90.6	80.3	74.7	59.4	43.6	71.6	80.5	75.8	71.7	80.7

CQS Q values

Q1	Q2	Q3	Q4	Q5	Q6	Q7	Q8	Q9	Q10	Q11	Q12	Q13	Q14	Q15
84.2	92.5	60.5	50.9	64.7	72.0	79.4	87.8	86.6	70.0	62.9	65.1	69.5	62.5	71.7

CQS: 69.8



Color parameters

Color temperature	Color rendering index	Red component	Color fidelity	Color gamut	Color quality scale	Color coordinate cie 1931	Color coordinate cie 1931	Color coordinate	Color coordinate	Color deviation from black body
CCT	CRI	CRI R9	TM30 Rf	TM30 Rg	CQS	x	y	u	v	Δuv
7128 K	74.8	-9.7	73.1	94.4	69.8	0.306	0.312	0.199	0.305	-0.0022

TM-30 details

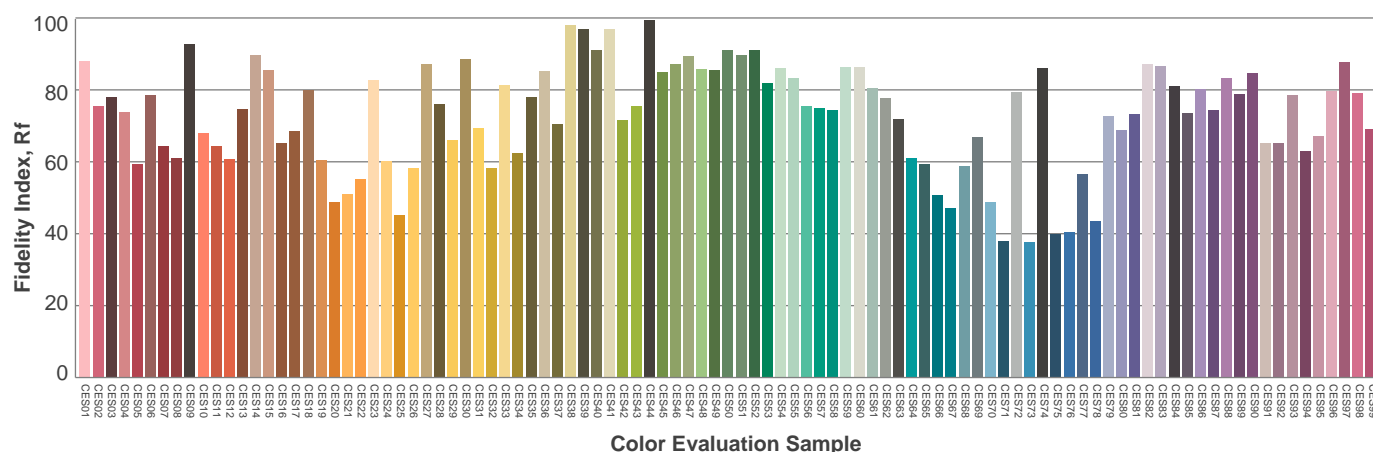
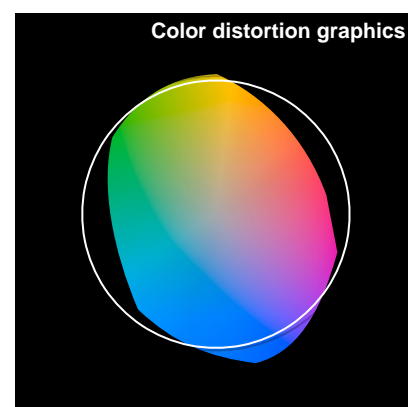
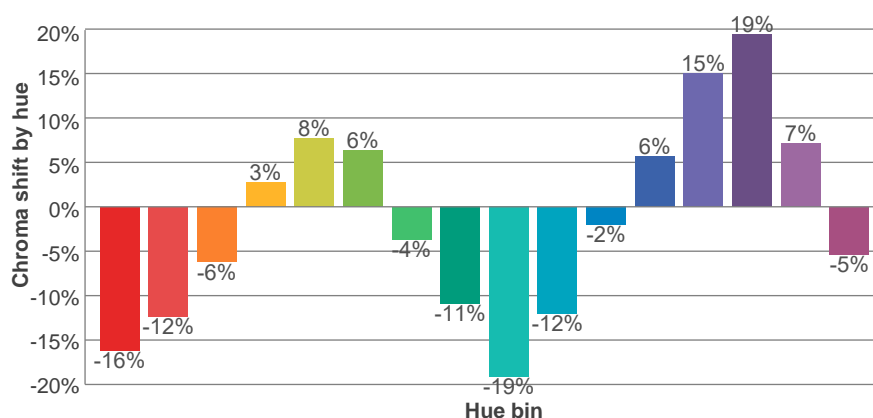
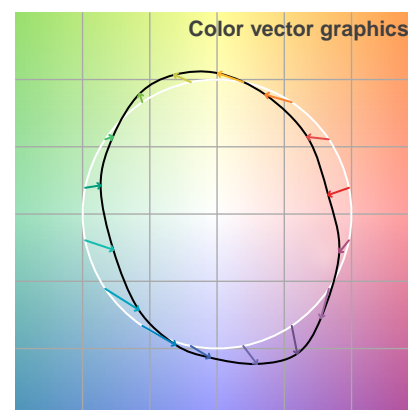
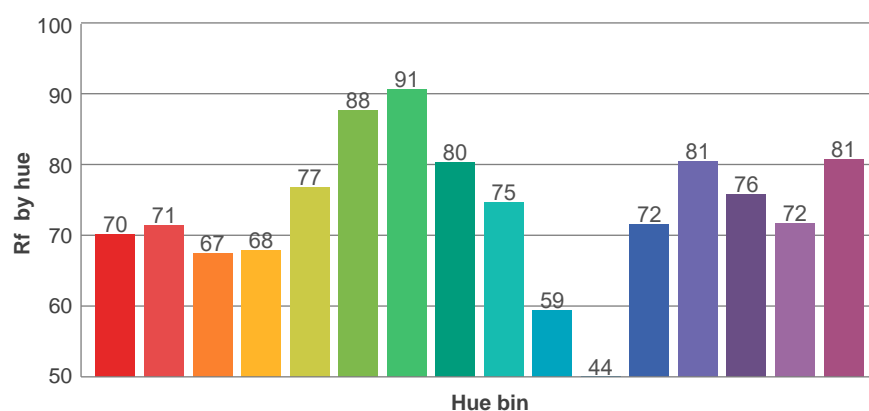
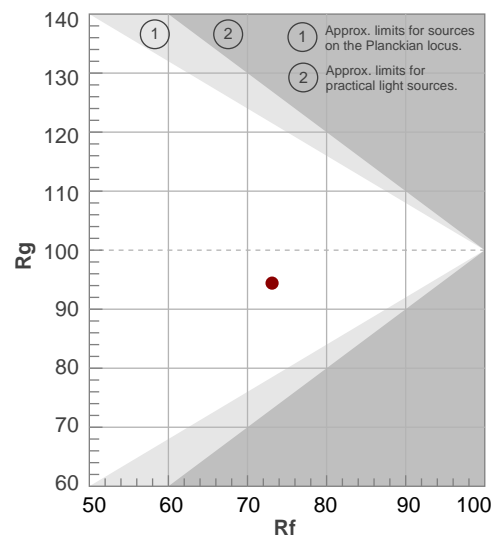
Rf 73.1

Fidelity index Rf

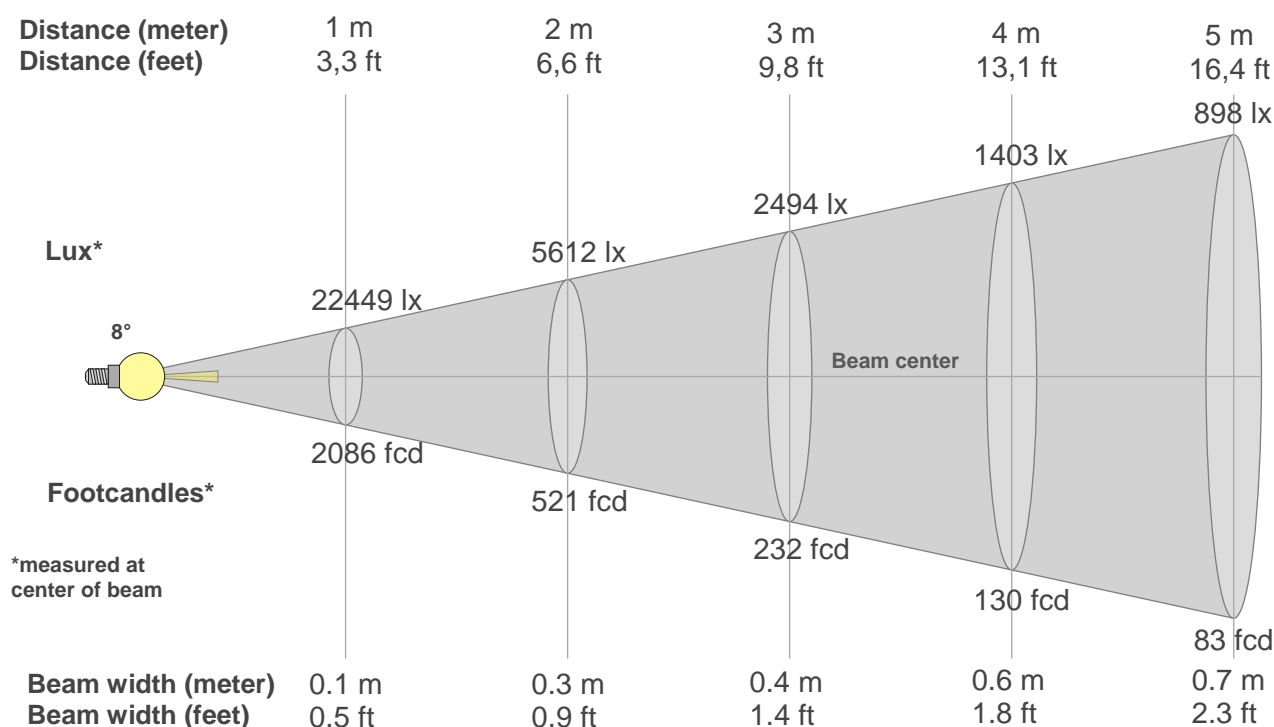
Rg 94.4

Gamut index Rg

Hue Bin	Ri	Shifts (%)	
		Chroma	Hue
1	70	-16%	-2%
2	71	-12%	10%
3	67	-6%	19%
4	68	3%	20%
5	77	8%	11%
6	88	6%	-2%
7	91	-4%	-5%
8	80	-11%	-4%
9	75	-19%	11%
10	59	-12%	27%
11	44	-2%	28%
12	72	6%	16%
13	81	15%	7%
14	76	19%	-8%
15	72	7%	-21%
16	81	-5%	-10%



Beam details



Beam intensities from 1-20m

1m	2m	3m	4m	5m	6m	7m	8m	9m	10m	11m	12m	13m	14m	15m	16m	17m	18m	19m	20m
3.3ft	6.6ft	9.8ft	13.1ft	16.4ft	19.7ft	23ft	26.2ft	29.5ft	32.8ft	36.1ft	39.4ft	42.7ft	45.9ft	49.2ft	52.5ft	55.8ft	59.1ft	62.3ft	65.6ft
22449lx	5612lx	2494lx	1403lx	898lx	624lx	458lx	351lx	277lx	224lx	186lx	156lx	133lx	115lx	100lx	88lx	78lx	69lx	62lx	56lx
2085.5fcd	521.4fcd	231.7fcd	130.3fcd	83.4fcd	57.9fcd	42.6fcd	32.6fcd	25.7fcd	20.9fcd	17.2fcd	14.5fcd	12.3fcd	10.6fcd	9.3fcd	8.1fcd	7.2fcd	6.4fcd	5.8fcd	5.2fcd

Intensities in 0° c-plane

0°	1°	2°	3°	4°	5°	6°	7°	8°	9°	10°	11°	12°	13°	14°	15°	16°	17°	18°	19°
22.4k	22.8k	22.7k	20.4k	11.7k	3.3k	0.9k	0.4k	0.2k	0.1k	0.0k	0.0k	0.0k	0.0k	0.0k	0.0k	0.0k	0.0k	0.0k	0.0k
100%	102%	101%	91%	52%	15%	4%	2%	1%	1%	0%	0%	0%	0%	0%	0%	0%	0%	0%	0%

Intensities in 90° c-plane

0°	1°	2°	3°	4°	5°	6°	7°	8°	9°	10°	11°	12°	13°	14°	15°	16°	17°	18°	19°
22.4k	22.8k	22.7k	20.4k	11.7k	3.3k	0.9k	0.4k	0.2k	0.1k	0.0k	0.0k	0.0k	0.0k	0.0k	0.0k	0.0k	0.0k	0.0k	0.0k
100%	102%	101%	91%	52%	15%	4%	2%	1%	1%	0%	0%	0%	0%	0%	0%	0%	0%	0%	0%

Intensities in 180° c-plane

0°	1°	2°	3°	4°	5°	6°	7°	8°	9°	10°	11°	12°	13°	14°	15°	16°	17°	18°	19°
22.4k	22.6k	22.7k	20.2k	11.7k	2.9k	1.0k	0.5k	0.3k	0.2k	0.1k	0.0k	0.0k	0.0k	0.0k	0.0k	0.0k	0.0k	0.0k	0.0k
100%	101%	101%	90%	52%	13%	4%	2%	1%	1%	0%	0%	0%	0%	0%	0%	0%	0%	0%	0%

Intensities in 270° c-plane

0°	1°	2°	3°	4°	5°	6°	7°	8°	9°	10°	11°	12°	13°	14°	15°	16°	17°	18°	19°
22.4k	22.6k	22.7k	20.2k	11.7k	2.9k	1.0k	0.5k	0.3k	0.2k	0.1k	0.0k	0.0k	0.0k	0.0k	0.0k	0.0k	0.0k	0.0k	0.0k
100%	101%	101%	90%	52%	13%	4%	2%	1%	1%	0%	0%	0%	0%	0%	0%	0%	0%	0%	0%

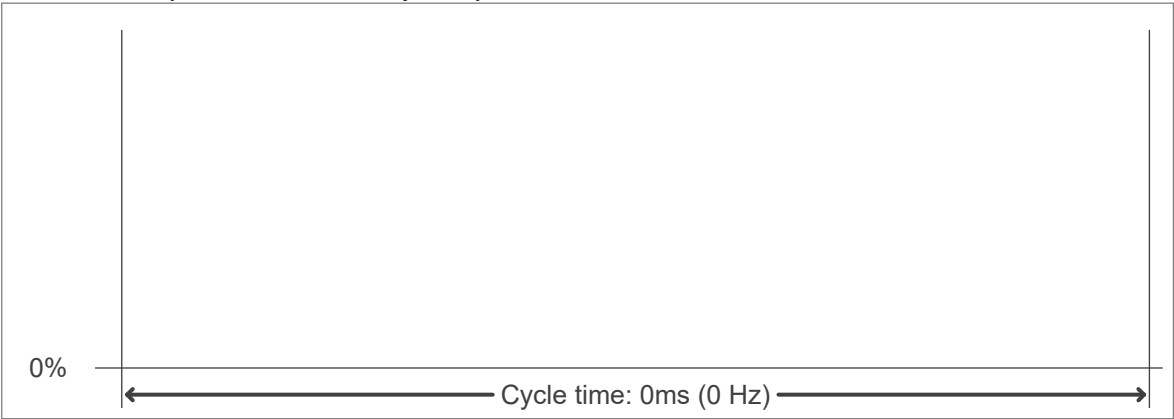
Beam angle 50%	Field angle 10%	Cutoff angle 2,5%	Intensity ratio in 120° cone	Intensity ratio in 90° cone
8°	10.5°	13.5°	100.0%	100.0%



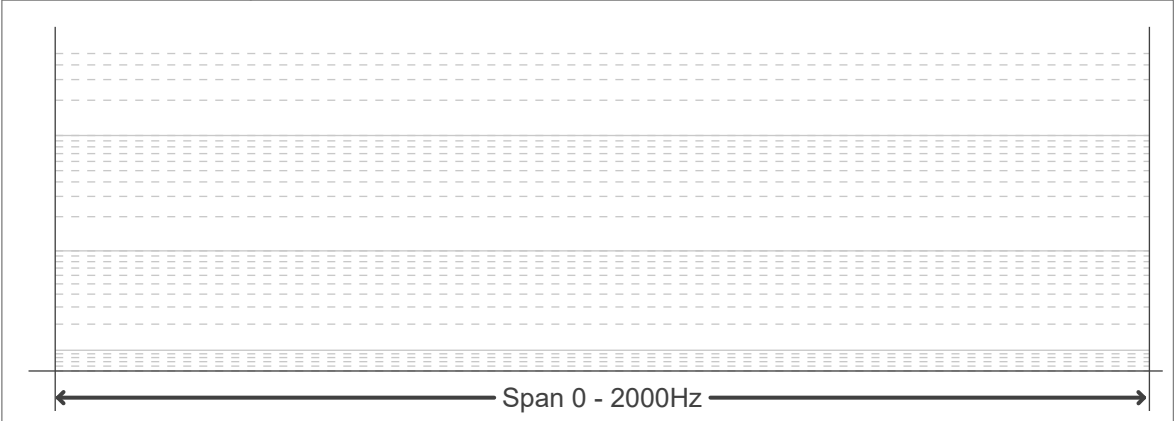
Flicker curve (complete sampled flicker signal)



Flicker frame (frame of one flicker period)



Flicker FFT (frequency scope of flicker curve)



Flicker results:

Flicker frequency:		n/a Hz	
Flicker index:	n/a	JA8/10 40Hz	n/a %
Flicker percentage:	n/a %	JA8/10 90Hz	n/a %
SVM: (Visual flicker)	n/a	JA8/10 200Hz	n/a %
PstLM	n/a	JA8/10 400Hz	n/a %
Mp	n/a	JA8/10 1000Hz	n/a %

Flicker conditions:

Sample rate:	n/a samples/second
--------------	--------------------